

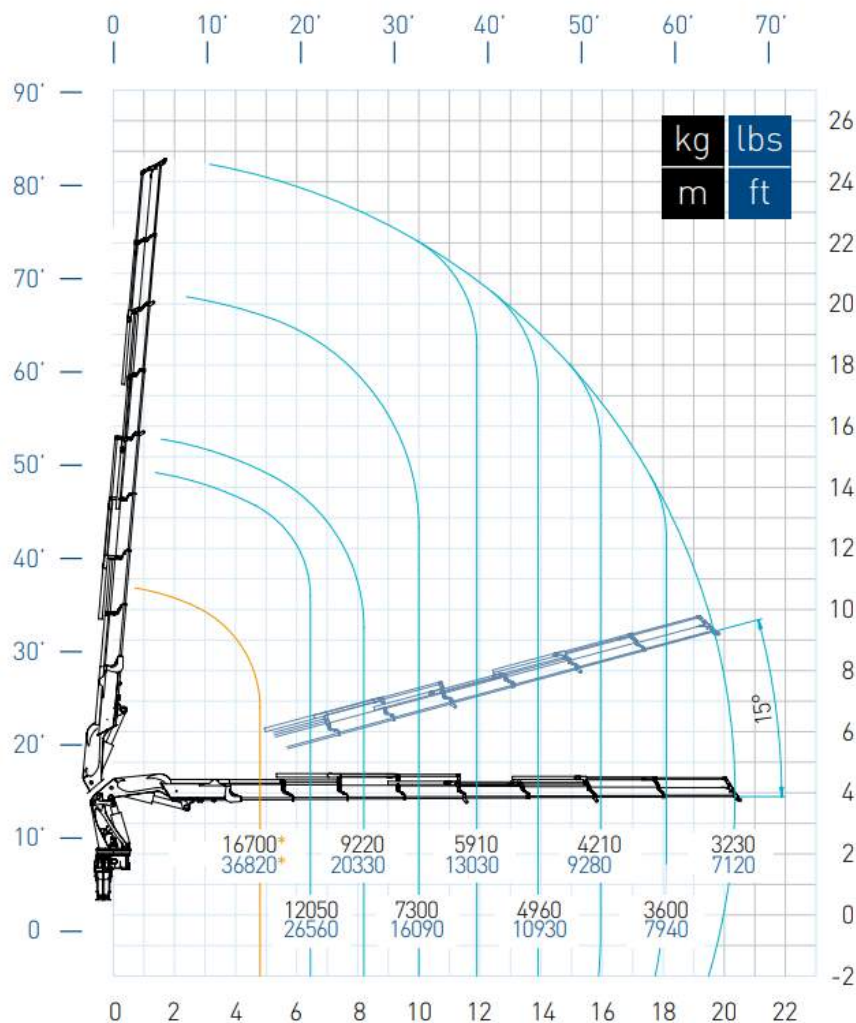


Vehicle:	T700
Body:	Artic
Payload:	11.2 - 31 tonne
Bed length:	10.5-11.5 meter
Crane:	100 tonne per meter
Side edge protection:	Yes
Wagon and Drag:	No
FORS:	Gold accredited
Euro 6 / ULEZ / DVS:	Yes

Notes:
STGO CAT2 (31t), 3 steering axles. Rear steer trailer.
Continuous rotation crane

Duty Chart

100028 SP



Duty Chart with FLY JIB

0 2 4 6 8 10 12 14 16 18 20 22 24 26 28 30 32

100028 SP + J1616.25

